



WELCOME To AZINE HEALTHCARE PVT. LTD.



Corp. Office:

208/209, 2nd Floor,
Dev Arc Shopping Complex,
Iscon Cross Road, S.G. Highway,
Ahmedabad - 380 015. (Guj.)
Ph: +91 90990 33833

Factory:

401, GIDC Kerala, Bavla-382220,
Distt. Ahmedabad (Guj.) Ph: +91 90990 33844
Visit us : www.azinehealthcare.com
E-mail : info@azinehealthcare.com /
sales@azinehealthcare.com



BRIEF INFORMATION ON THE FIRM

AHPL is a professionally managed private limited pharmaceutical company. We manufacture a wide range of pharmaceutical product formulation in general category including tablets, Oral Liquids, Oral Powder, Capsule and External Preparation.

Our manufacturing facilities are located at industrial zone, 401, GIDC Kerala, Taluka Bavala (Dist. Ahmedabad)

Our Company is corporate in year of 2002 and has consistently recorded high growth rates and has established itself as a progressive, Professionally managed independent Healthcare Company.

LICENSED PHARMA MFG. ACTIVITIES:

Manufacturing Licenses are granted by F.D.C.A. Gujarat state (India), Which is as follow.

For the manufacturing of the pharmaceutical dosage forms i.e. Tablets, Oral liquids, Oral Powder, Capsules and External Preparation.

Our in-house Quality Control department is facilitated with modern technology laboratory equipments to meet the international standards.

Form No.	Licence No.	Valid up to
25	G/1829	20/12/2008 TO 19/12/2028
28	G/1285	20/12/2008 TO 19/12/2028

- The Site is about 40 kilometer far from Ahmedabad city Located on 401, GIDC Kerala, Ta: Bavla, Dist: Ahmedabad. ON 2942 Sq. Mt. Flat Land. The Surrounding area do not have any polluting industries. The G.I.D.C area having good surfacing roads of 20fit width, on both side of plant. Other 2 side surrounded is pharmaceuticals unit.

Sr.No.	Section	Build Up Area
01	Solid Oral Tablet Manufacturing Area (Non-Betalactum)	176.61 Sq. M.
02	Oral Liquid Manufacturing Area (Non-Betalactum)	162.5 Sq. M.
03	Oral Powder Manufacturing Area (Non-Betalactum)	99.62 Sq. M.
04	Hard Gelatine Capsule Mfg Area (Non-Betalactum)	42.37 Sq. M.
05	Non sterile external Ointment Manufacturing Area	92.72 Sq. M.
06	Q.C/Q.A/MICRO	138.69 Sq. M.
07	Store R.M	401.33 Sq. M.
08	Store P.M	222.75 Sq. M.
09	Store Finish good	22.89 Sq. M. + 150 Sq. M.
10	Primary Packaging Area	150 Sq. M.
11	Secondary Packaging Area	600 Sq. M.

Description	Staff	Workers
Production		
Oral Liquid	2	30
Tablet	3	30
ORS	1	10
Capsule	1	10
Ointment	2	10
Q.C. / Q.A.	6	3
Ware House	3	8
Utility & Engineering	2	5
Personnel & Administration	4	5
House Keeping	-	6
	24	117
Total	141	



MANUFACTURING FACILITY

This state-of-the-art manufacturing facilities are cGMP (current Good Manufacturing Practices) compliant in conformity with national and international standards. It is equipped with hi-tech sophisticated machineries which are internationally accepted to achieve high level of accuracy and precision.

Perpetual approach of the AZINE HEALTHCARE management to upgrade the manufacturing facilities and adapt the technological innovations make the facilities to consistently excel and produce the best quality medicines at an affordable price.

MANUFACTURING CAPACITIES - TABLETS

➔ GRANULATION (SSPM)

- RMG 100 KG
- FBD120 KG
- BLENDER 600 KG

➔ COMPRESSION (CLIT)

- 27 STATION 1 NOS
- 35 STATION 2 NOS

➔ COATING (SOLACE ENGINEERS)

- AUTOCOATER 1 NOS (48 INCH)
- COATING PAN (16,48 INCH)

➔ PACKING

- BLISTER MACHINE 1 NOS (**IMA-PG**) (8 LACS PER SHIFT)
- BLISTER MACHINE 1 NOS (**AN-PACK**) (5 LACS PER SHIFT)
- STRIP PACK MACHINE 1 NOS (**SATELLITE**) (6 LACS PER SHIFT)
- ALU ALU MACHINE 1 NOS (**EXCEL PLUS OF IMA-PG**) (5 LACS PER SHIFT)



Production : 20,00,000 Tablets per Day

MANUFACTURING CAPACITIES - LIQUID

➔ MFG LINE: (PHARMATECH PROCESS EQUIPMENTS)

- SUGAR SYRUP TANK 2250 LTR
- MFG TANK 3000 LTR
- MGF TANK 500 LTR
- LIQUID STORAGE TANK 3000 LTR

➔ FILLING LINE: (GMP) 6 HEAD

- FILLING MACHINE 120 BOTTLES PER MIN
- CAPPING MACHINE 120 BOTTLES PER MIN

➔ PACKING LINE: (NPM MACHINERY)

- PRINTING AND LABELING MACHINE
150 BOTTLES PER MIN
- MEASURING CUP DISPENSER



Production : 40,000 Bottles per Day

MANUFACTURING CAPACITIES - EXTERNAL PREPARATION

➔ MGF LINE: (PRECIKOT - KHOTHARI PHARMA)

- WATER PHASE VESSEL
- WAX PHASE VESSEL
- MFG VESSEL
- STORAGE TANK 2 (300 KG)

➔ FILLING LINE: (CAELSONS INDUSTRIES)

- TUBE FILLING AND SEALING MACHINE (45 PER MIN)
- LOTION FILLING AND SEALING MACHINE



Production : 20,000 Tubes per Day
: 10,000 Lotion / Shampoo per Day

MANUFACTURING CAPACITIES - ORS

➔ MFG LINE: (SSPM)

- OCTAGONAL BLENDER (600 KG.)
- F.B.D (120 KG.)
- MASS MIXER (100 KG.)

➔ FILLING LINE:

- FILLING AND SEALING MACHINE 1
- FILLING AND SEALING MACHINE 2
- FILLING AND SEALING MACHINE 3

Production : 1,00,000 Pouch per Day

MANUFACTURING CAPACITIES - CAPSULES

➔ MFG LINE: (NPM)

- CONE BLENDER 100 KG

➔ FILLING LINE: (ACG PAAM)

- AUTOMATIC CAPSULE FILLING AND SEALING MACHINE (PF-90)
(2000 CAPSULE PER MIN)
- CAPSULE POLISHING AND CHECKING CONVEYER BELT

Production : 5,00,000 Capsules per Day



WAREHOUSE CAPACITY

- ➔ RM Store : 401.33 Sq. M.
- ➔ PM Store : 222.75 Sq. M.
- ➔ FG Store : 22.89 Sq. M. + 150 Sq. M.



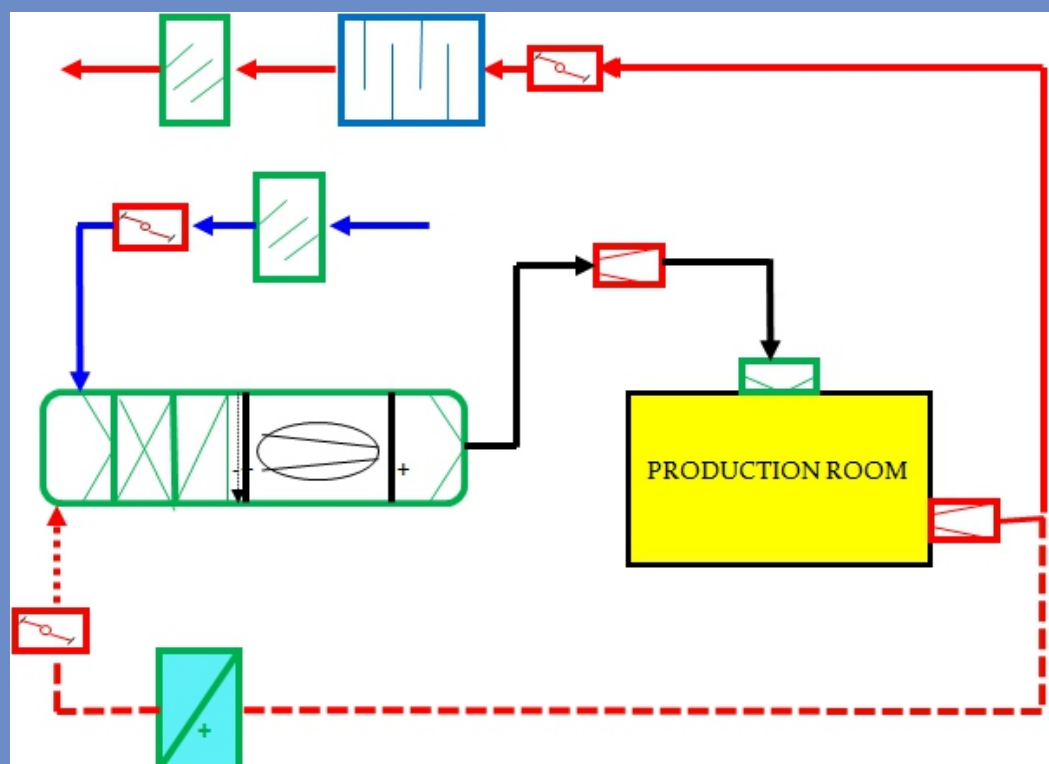
UTILITY CAPACITY

- ➔ CHILLER PLANT (YORK)
- ➔ COOLING TOWER
- ➔ BOILER (THERMAX) (850 KG) NON-IBR
- ➔ PURIFIED WATER PLANT: 2000 LTR PER Hr (MAX WATER TREATMENT)
- ➔ AIR COMPRESSOR 2 NOS. (65 CFM)
- ➔ AHU 27 NOS (ULTRA AIR TECH)
- ➔ ETP (500 Lit. per Shift)

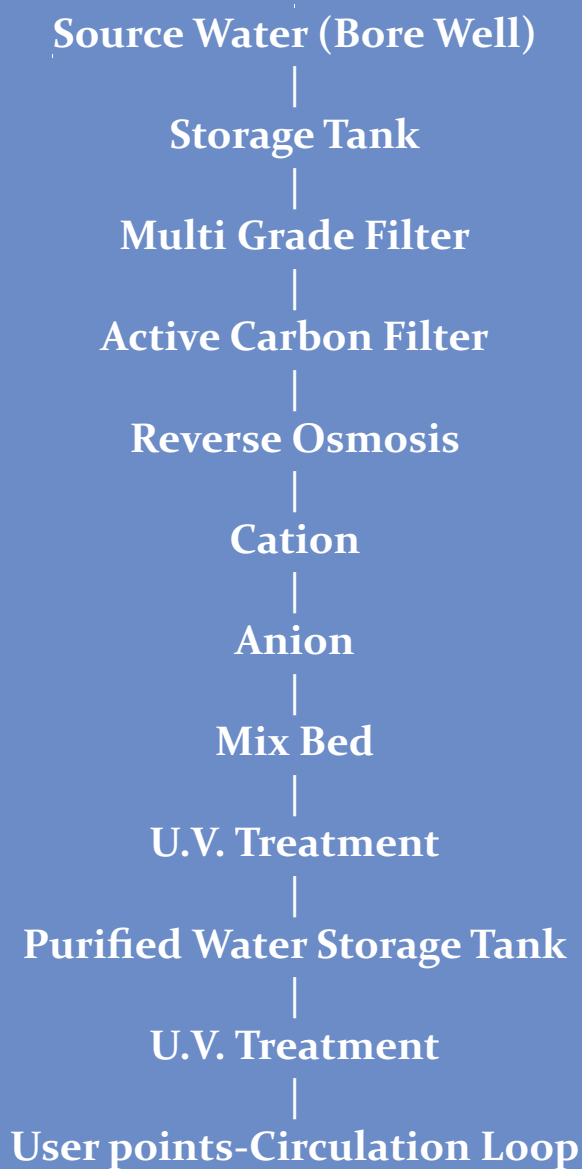


HVAC SYSTEM

- ➔ Total Number of AHU's -27
- ➔ SPECIFICATIONS
- ➔ Double Skin construction with 25 mm thick pressure injected polyurethane foam sandwich insulation with thermal break & internal coving.
- ➔ DIDW Backward curved fans.
- ➔ Motor with IP -55 protection.
- ➔ 4-6 row deep chilled water cooling coils
- ➔ 20-Micron filter at AHU Fresh Air intake.
- ➔ 10-micron filter
- ➔ 3-micron filter (after the fan)
- ➔ 0.3-micron HEPA filter (for Class 100000 area)



WATER SYSTEM



Capacity : 1500 Lit. per Hour

QUALITY CONTROL

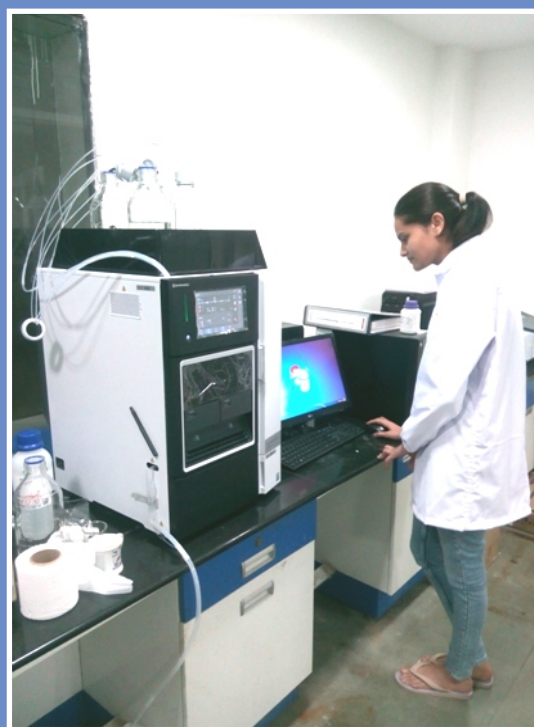
The quality control laboratory has the latest high precision equipments that assures quality at every stage of product including inputs. We have dedicated team of experts who consistently ensure the highest quality standards built into our products. We follow the current Good Laboratory Practices (cGLP) in total quality management and achieving such standard is an important step towards the systematic and documented work culture.

The laboratory is designed, as per cGLP guidelines for ease of operation, maintenance, and cleaning. The laboratory is separated from Mfg. area & divided in four areas.

[1] Chemical Analysis,

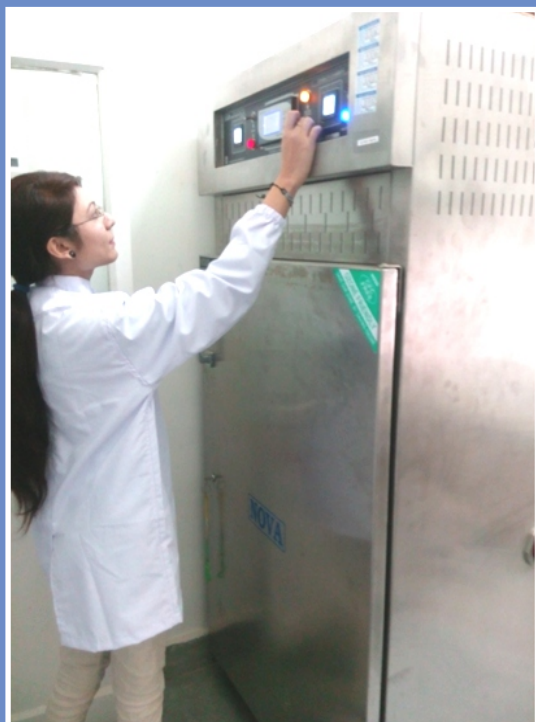


[2] Sophisticated instruments

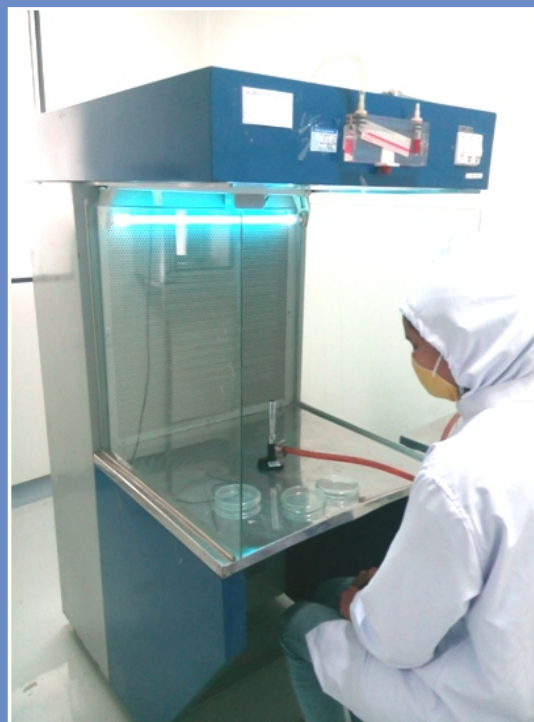


QUALITY CONTROL

[3] Other instruments and



[4] Microbiology



Maximum space is provided for documentation work. Adequate provision is made for orderly and secure storage of reagents, reference standard and retained samples.

List of critical Instruments

Quality Control

HPLC	Shimadzu	2 Nos.
Dissolution Test Apparatus	Lab India	2 Nos.
FTIR	Shimadzu	1 Nos.
UV VIS	Shimadzu	2 Nos.
BOD incubators	Harsh Tronic	2 Nos.
Stability Chambers	NOVA	2 Nos.

QUALITY ASSURANCE

THE QUALITY MANAGEMENT SYSTEM :

Quality Policy :

This commitments to quality requires us to ensure that our facility is geared up to provide the right environment, for our operational procedure under specified conditions, for our personnel are trained to have quality conscious every time to designed our products designed with built-in quality, and also for our packaging systems which provide the requisite security to hold its cosmetic appeal throughout its self life in the market, which give complete satisfaction to customer.

Quality System follows:

- **cGMP / GLP implementation, internal Audit & Training.**
- **Documentation Control.**
- **Complaint handling, Product recalls & rejection handling.**
- **Vendor qualification / development.**
- **Investigation of Out of Specification results.**
- **Control of Printed packaging materials.**
- **In process Quality Control release / rejection.**
- **Stability evaluation of Products.**
- **Batch records and Analytical Data review.**
- **Qualification, Validation and calibration.**
- **Storage, Retention and Destruction of retain Samples.**
- **Change control and Deviation Management.**
- **Annual Product Review.**
- **Batch Release.**

QUALITY ASSURANCE

“The sum total of the organized arrangements is to ensure that pharmaceutical product are of the highest quality for the lifecare”



Thank You.....